



Holding management company
«Bobruiskagromash»

www.bobruiskagromach.com



PRODUCTION



www.bobruiskagromach.com

- We produce more than
80 kinds of products

- More than 40 partner
countries



www.bobruiskagromach.com

Slurry spreaders



Machines for applying liquid organic fertilizers is designed for bootstrapping, transportation, mixing and continuous surface or subsurface distribution of liquid organic fertilizers as well as for transportation and industrial water and other non-aggressive liquids.

Load capacity : 6; 11; 16 and 20 tons.



Manure spreaders



The machines are designed for transportation and overall surface application of solid organic fertilizers as well as for transportation of different agricultural loads with rear conveyor discharge.

Load capacity : 7,5; 9,5; 12; 15; 18; 20 and 24 tons.



Mineral fertilizer spreaders

The machines are designed for surface introduction of solid mineral fertilizers in the granulated and crystalline look, and also for top dressing of winter grain crops (in early stage of development) , meadows and pastures.

Load capacity : 1; 1,6; 3; 4; 8 and 10 tons.



Machinery for forage harvesting and storing

Mowers designed for mowing and swathing natural and seeded grasses, including heavy-yielding and laid grasses. Mowers is applied in all areas, except mountain ones, on leveled meadows (hayfields) without stones protruding from the ground for more than 30 mm.

Mounted



Semi-trailer



Machinery for forage harvesting and storing

Rotary rake is designed for raking grass, including pre-wilted and recently mown grass from swaths into windrows, for tedding in swaths, turning, spreading and windrows doubling .



Machinery for forage harvesting and storing

Round balers are designed to pick up and press into rolls windrows of natural and sown-grass hay, straw with following twine wrapping.



Machinery for forage harvesting and storing

Bale wrapper is designed for packing rolls of hay into a polymer film.



Loading machine is designed for lifting, loading, moving and stacking of rolled forage and other agricultural goods before 900 kg.



Transporter is designed for self-loading, transportation, and unloading of bales of roughage and flax pressed by a baler.

Machinery for feed preparation and distribution

Machines are designed for self-loading , grinding, mixing of multi-component feed mixtures (roots, hay, silage, combined feed and other supplements), transportation and distribution of well-balanced feed to feeding trough or feeding table .

Vertical mixing auger



Horizontal mixing auger



The feeder is designed for transportation and one side distribution of chopped leaf-and-stem corn mass, legumes and legume grass, silage, haylage or feed mixtures into bunks.



Machinery for feed preparation and distribution

Grinders are designed for self-loading, transportation, grinding rolled coarse forages and distribution of ground mass when moving into feeding troughs or on the feeding table, as well as to feed the litter material into the stalls inside animal breeding facilities or outdoor exercise grounds.



Trailers

Capacity manufactured trailers ranges from 1,5 to 17 tons

Equipped with mesh or solid metal added boards.

Trailers can work in pair with a total carrying capacity 29 tons.

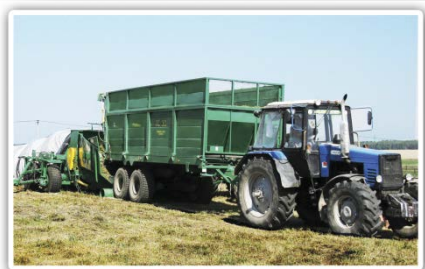
Various unloading options



Semi-trailers

Semitrailers are designed for reception and transportation of ground mass fodder crops from forage harvesters, and also for its subsequent delivery to the place of storage and unloading by the conveyor or loading into the receiving bunker of the packer of silage-silage mass USM-1 or similar machines.

Load capacity of semitrailers produced from 8 tons to 14 tons.



Other equipment

- Machines for harvesting flax
- Equipment for handling and storage of grain
- The equipment for post-harvest potato refinement
- Tillage equipment



Tillage machines



Bobruiskagromash has an extensive product range of passive tillage equipment. Our machines range from narrow to wide and are suitable for stubble to very deep tillage. Tillage equipment from Bobruiskagromash stands for quality machinery for every farmer.



According to the requirements of the EU Regulation №167 / 2013 OJSC “Holding management company “Bobruiskagromash” has certified next machineries:

Tractor semi-trailers: **PST-6, PST-9, PST-12, PSTB-12;**

Tractor trailers: **2 PTS-4,5, 2PTS-6;**

Baler **PR-60;**

Round balers: **PR-F-110, PR-F-145, PR-F-180, PRI-150;**

Slurry spreaders **MJT-F-6, MJT-F-11, MJU-16;**

Sold organic fertilizer applicators: **MTT-9, MTU-15, MTU-18.**



According to the EU Directive 2006/42/EU OJSC “Holding management company “Bobruiskagromash” has certified next machineries:

Disc grass-mowing machine **KDN-210;**

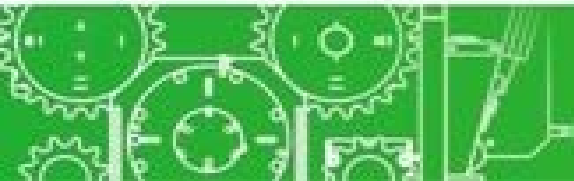
Rakes **GVR-630;**

Silage and hay mass packer **USM-1.**

In the process of getting certification are next machineries:

Forage bale shredder **IGK-5**, feed distributors **RSK-12, ISRV-12.**

In the nearest future certification will get mineral fertilizer applicators, tractors semi-trailers with carrying capacity from 14t and higher.



Thank you for attention!

5, Shinnaya street, 213822,
Bobruisk, Republic of Belarus

Tel. +375225 72-40-41,
72-41-73, 72-40-47

info@bobruiskagromach.com

www.bobruiskagromach.com



www.bobruiskagromach.com